

Date: December 2019

Project Information Sheet

Project Name: Nursery School

Project Start Date: 2005

Project Cost: £32,500

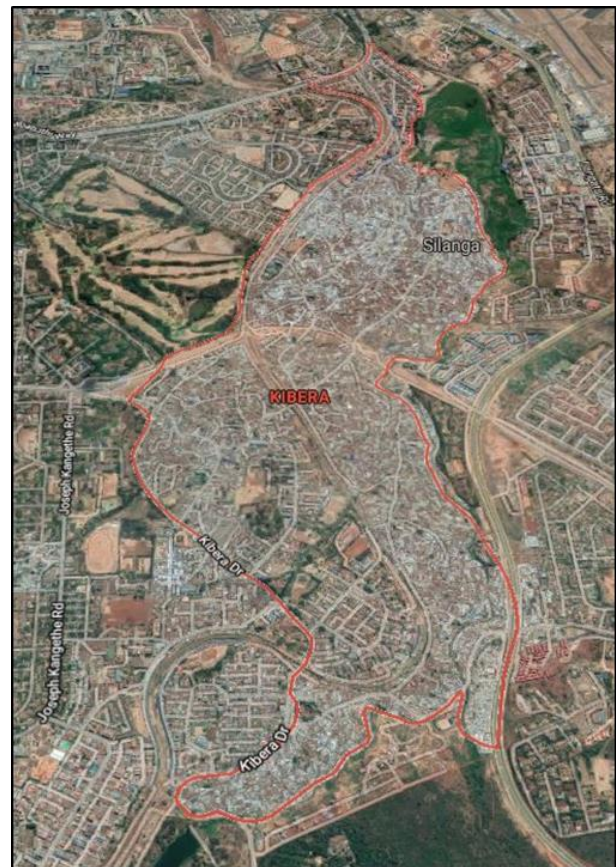
Location: Kibera, Nairobi, Kenya

Project Completion: 2007

Additional Assistance: 2017/18



Kibera is probably the largest slum in Kenya with over 1million people eking out an existence. It is located right in the heart of the capital city, Nairobi. It is rife with poverty, crime, and diseases such as HIV/AIDS and malaria. There is not much going for Kibera, but it is also a thriving community where The Salvation Army has an important witness and role to play in the pre-school education of these young children, many of whom are either orphans or from single parent families. The environment is tough, but the peace and security found within the walls of The Salvation Army compound is priceless.



Somewhere in this vast slum that is called Kibera, is a haven of peace and tranquillity: The local Salvation Army compound, with a church and a nursery school.

The Project:

Initially the project at Kibera was to replace to very delapidated corrugated iron classrooms which had no windows with a purpose built classroom block. The project grew to include the building of a perimeter wall to improve security, building new pit latrines, a fenced off secure play area as well as a re-equipping the kitchen. Support for the school has continued with provision of teaching materials and equipment.

The children have flourished in this new enviroment.

Pictures of the old classrooms at Kibera.



The class of 2017 graduating from Kibera Nursery School.

Pictures of the new facilities provided through funding from The Kenya Trust



For more information on current projects please email us at info@thekenyatrust.org.uk .

You can also visit our website www.thekenyatrust.org.uk or our Facebook page.

Thank you.