

Date: December 2019

## Project Information Sheet

**Project Name:** Gategi Primary School

**Project Start Date:** 2009

**Project Cost:** £8,000

**Location:** Gategi, Central Kenya

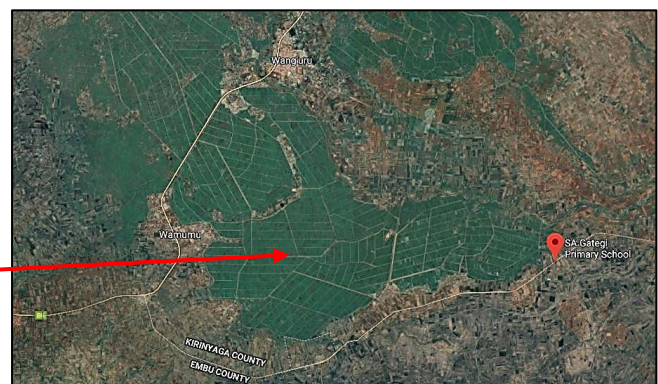
**Project Completion:** 2010/2011



*There are a number of Salvation Army schools in and around Gategi, but this primary school offers special needs education to a number of children with mental health issues.*

*The school is located on the outskirts of the town of Gategi in Embu District in Central Kenya not far from Mount Kenya.*

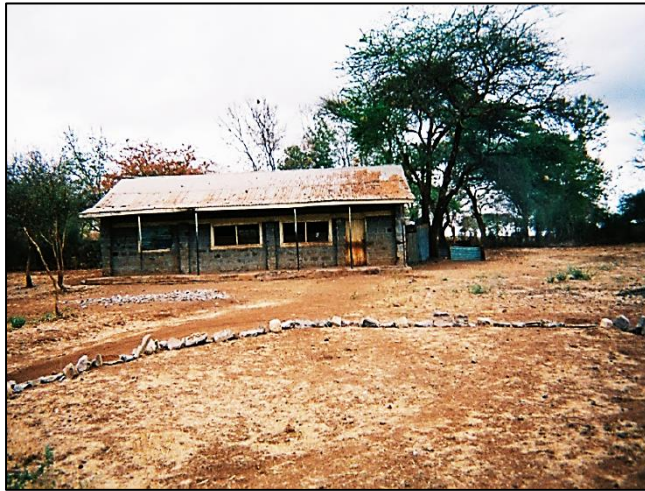
*The town is just over 2 hours' drive from the capital Nairobi. Gategi is a tea growing area with a large tea plantation just outside the town.*



## The Project:

The dormitory at this Special Needs School was in a very delapidated condition and did not provide a safe environment for the pupils. The Kenya Trust funded the renovation of the building and provision of new facilities. The renovated building contains a dining room, two separate sleeping areas with washrooms for each area, one for girls and one for boys. Marshal Currie, who was The Salvation Army Project Officer at the time of the renovations said, “the School and local Corps have done a great job with the renovations – I think they’ve achieved a ‘loaves and fishes’ miracle in making the funds stretch as far as they have.”

*The old dormitory.*



*The newly built dormitory.*



In 2011 additional funds were provided to the school enabling them to add a small kitchen, dining room furniture and mattresses for the dormitory and educational supplies. A pit latrine close to the dormitory was also built with funds from The Kenya Trust which allowed the children safe access, particularly at night.

For more information on current projects please email us at [info@thekenyatrust.org.uk](mailto:info@thekenyatrust.org.uk) .

You can also visit our website [www.thekenyatrust.org.uk](http://www.thekenyatrust.org.uk) or our Facebook page.

Thank you.